



SutureOut is the first disposable guarded blade specifically designed for safely cutting sutures from the outside. Its unique design minimizes patient discomfort while making the procedure simpler and faster for the practitioner, especially in cases of tightly-tied knots and embedded sutures. Produced with sustainability and economy in mind, this is a disposable option that will reduce your environmental footprint and expenses at the same time.

## **IT'S EASIER.**

Conventional tools require substantial elevation of the suture loop to cut from the inside. This can be particularly challenging in cases of thin skin, tightly-tied knots, and embedded stitches, as well as anxious or uncooperative patients.

## **IT SAVES YOU MONEY.**

SutureOut is an affordable disposable tool that will spare you wasted labour time and money on reprocessing and replacement of autoclave instruments. Reduce your disposal expense by using a tool that is significantly smaller in volume compared to scissors.

## **IT'S CLEANER.**

Maximize hygiene by utilizing SutureOut's unique tacky surface to collect removed sutures on the tool itself. Using this single-use, disposable tool will minimize risk of wound contamination while helping to keep the workspace free of dropped sutures.

## **IT'S LESS LIKELY TO CAUSE TRAUMA.**

Conventional tools require unnecessary excessive elevation of the suture loop, which causes damage to the freshly healed wound. SutureOut greatly reduces the tension requirement by allowing the practitioner to cut from outside the suture loop.

## **IT'S GREAT FOR UNCOOPERATIVE PATIENTS.**

SutureOut was developed by a plastic surgeon after he witnessed his daughter's own discomfort during suture removal using scissors. SutureOut's outside cutting approach and less intimidating appearance will greatly reduce the stress of the procedure for your patients.

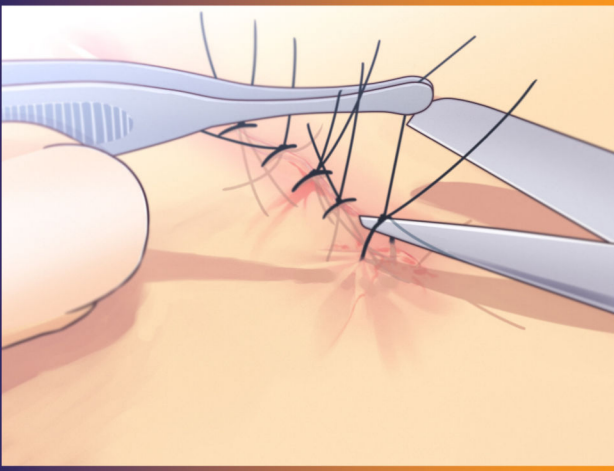
## **IT'S LESS WASTEFUL.**

Modern clinics and practices have become increasingly concerned about the environmental impact of reprocessing and the disposal of metal tools. SutureOut is designed with sustainability in mind and is composed of mostly degradable materials, making it far more environmentally friendly than conventional tools.

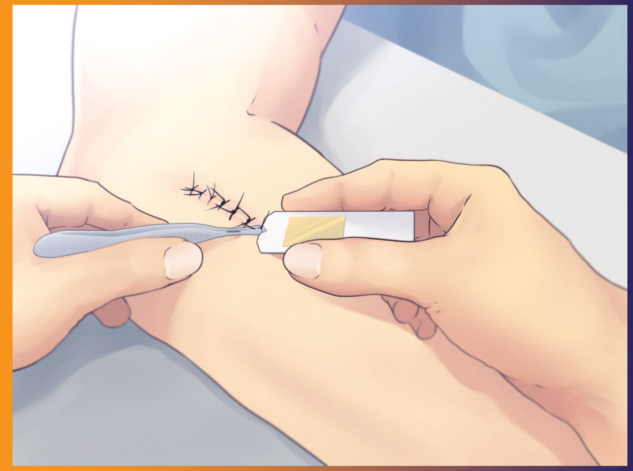
## **IT'S MORE EFFICIENT.**

Spend less time on suture removal and focus on more critical procedures. In some cases, patients can be sent home with a SutureOut kit to remove their own sutures.

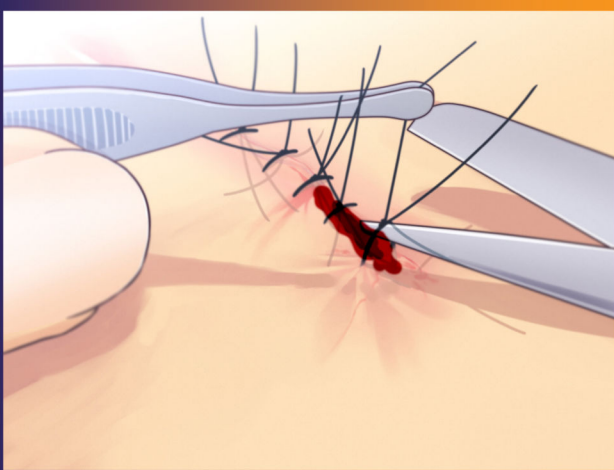
**To Order, please reference "SO-K" for kits and "SO-T" for tool only.**



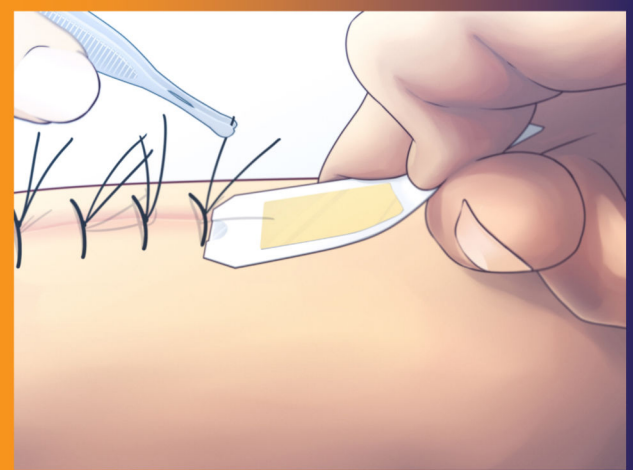
Scissors require an inside-out approach that leads to substantial elevation of the knot. This causes tension on the knot and patient discomfort. It can also damage the wound and prolong the procedure.



SutureOut's outside-in approach requires minimal elevation of the knot. Less tension on the knot is more comfortable for the patient, and allows the practitioner to work more efficiently.



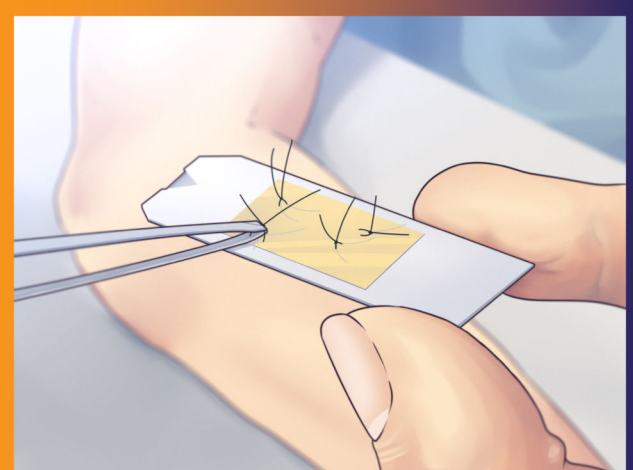
Using scissors precisely can be problematic, especially in the case of a complicated wound or an uncooperative patient. The unguarded tip can disrupt the wound and prolong healing.



SutureOut's outside-in approach and guarded blade reduce the risk of inadvertent wound damage and patient injury. Patients receive a more comfortable experience, and healing time is shortened.



Conventional tools provide no effective means to collect removed sutures and leave the workspace contaminated, wasting time and money on clean up.



Removed sutures are efficiently collected on SutureOut's tacky surface. No cleanup means saved time and a more hygienic workspace.